

Kress

Commercial



SAFETY AND OPERATING MANUAL

Power head

KAC104

TABLE OF CONTENTS

Introduction.....	2
Component List.....	3
Product Safety.....	4
Assembly & Operation.....	7
Transportation.....	10
Maintenance.....	10
Cleaning.....	10
Storage.....	11
Troubleshooting.....	11
Technical Data.....	11

INTRODUCTION

Dear Customer,

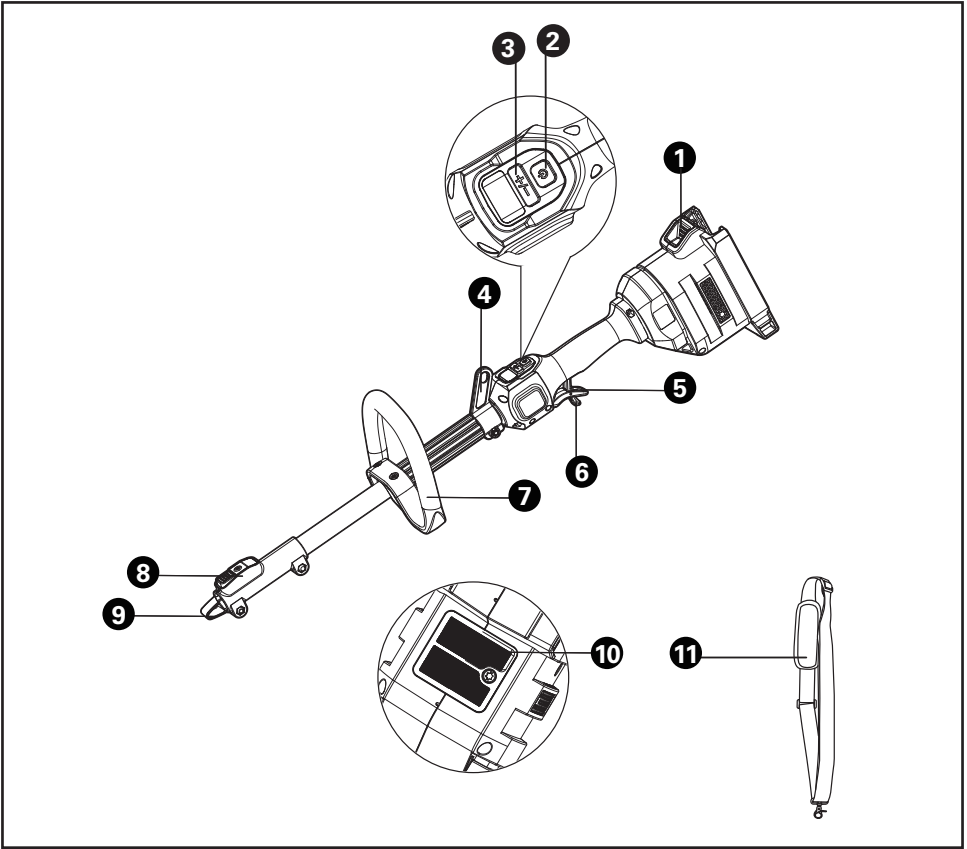
Thank you for buying this Kress Commercial product. We are dedicated to developing high quality products to meet your commercial landscaping requirements.

The Kress brand is synonymous with premium quality service. Over the years of your product's life, if you have any questions or concerns about your product, please contact your dealer or our Customer Service Team for assistance.

We are confident you will enjoy working with your Kress product for years to come.

INTENDED USE

The multi tool power head will operate with the following attachments: grass trimmer, straight shaft edger, curved shaft edger, hedge trimmer, pole saw, etc. An additional extension shaft enables further reach for some applications.




COMPONENT LIST

- | | |
|-----|-----------------------|
| 1. | BATTERY PACK RELEASE |
| 2. | ON / OFF SWITCH |
| 3. | SPEED CONTROL |
| 4. | SHOULDER STRAP MOUNT |
| 5. | THROTTLE TRIGGER |
| 6. | SAFETY LOCK OFF LEVER |
| 7. | FRONT HANDLE |
| 8. | SHAFT-RELEASE BUTTON |
| 9. | WING KNOB |
| 10. | AIR FILTER |
| 11. | SHOULDER STRAP * |

* Not all the accessories illustrated or described are included in standard delivery.

GENERAL OUTDOOR POWER EQUIPMENT SAFETY WARNINGS

 **WARNING:** Read all safety warnings, instructions, illustrations and specifications provided with this outdoor power equipment. Failure to follow all instructions listed below may result in electric shock, fire and/or serious injury.

Save all warnings and instructions for future reference.

The term "outdoor power equipment" in the warnings refers to your corded outdoor power equipment or battery-operated (cordless) outdoor power equipment.

1. Work area safety

- a) **Keep work area clean and well lit.** *Cluttered or dark areas invite accidents.*
- b) **Do not operate outdoor power equipments in explosive atmospheres, such as in the presence of flammable liquids, gases or dust.** *Outdoor power equipments create sparks which may ignite the dust or fumes.*
- c) **Keep children and bystanders away while operating a outdoor power equipment.** *Distractions can cause you to lose control.*

2. Electrical safety

- a) **Outdoor power equipment plugs must match the outlet. Never modify the plug in any way. Do not use any adapter plugs with earthed (grounded) outdoor power equipments.** *Unmodified plugs and matching outlets will reduce risk of electric shock.*
- b) **Avoid body contact with earthed or grounded surfaces, such as pipes, radiators, ranges and refrigerators.** *There is an increased risk of electric shock if your body is earthed or grounded.*
- c) **Do not operate the machine in rain or wet conditions. This may increase the risk of electric shock.** *If the machine becomes wet in the rain during operation, the machine and the battery should be dried before storing or charging. Remove the battery and reinsert it if the machine fails to turn on. Keep battery connection free of dirt and debris, and clean with a soft and dry brush or cloth.*
- d) **Do not abuse the cord. Never use the cord for carrying, pulling or unplugging the outdoor power equipment. Keep cord away from heat, oil, sharp edges or moving parts.** *Damaged or entangled cords increase the risk of electric shock.*
- e) **When operating a outdoor power equipment outdoors, use an extension cord suitable for outdoor use.** *Use of a cord suitable for outdoor use reduces the risk of electric shock.*
- f) **If operating a outdoor power equipment in a damp location is unavoidable, use a residual current device (RCD) protected supply.** *Use of an RCD reduces the risk of electric shock.*

3. Personal safety

- a) **Stay alert, watch what you are doing and use common sense when operating a outdoor power equipment. Do not use a outdoor power equipment while you are tired or under the influence of drugs, alcohol or medication.** *A moment of inattention while operating outdoor power equipments may result in serious personal injury.*
- b) **Use personal protective equipment. Always wear eye protection.** *Protective equipment such as dust mask, non-skid safety shoes, hard hat, or hearing protection used for appropriate conditions will reduce personal injuries.*
- c) **Prevent unintentional starting. Ensure the switch is in the off-position before connecting to power source and/or battery pack, picking up or carrying the tool.** *Carrying outdoor power equipments with your finger on the switch or energizing outdoor power equipments that have the switch on invites accidents.*
- d) **Remove any adjusting key or wrench before turning the outdoor power equipment on.** *A wrench or a key left attached to a rotating part of the outdoor power equipment may result in personal injury.*
- e) **Do not overreach. Keep proper footing and balance at all times.** *This enables better control of the outdoor power equipment in unexpected situations.*
- f) **Dress properly. Do not wear loose clothing or jewellery. Keep your hair, clothing and gloves away from moving parts.** *Loose clothes, jewellery or long hair can be caught in moving parts.*
- g) **If devices are provided for the connection of dust extraction and collection facilities, ensure these are connected and properly used.** *Use of dust collection can reduce dust-related hazards.*
- h) **Do not let familiarity gained from frequent use of tools allow you to become complacent and ignore tool safety principles.** *A careless action can cause severe injury within a fraction of a second.*

4. Outdoor power equipment use and care

- a) **Do not force the outdoor power equipment. Use the correct outdoor power equipment for your application.** *The correct outdoor power equipment will do the job better and safer at the rate for which it was designed.*
- b) **Do not use the outdoor power equipment if the switch does not turn it on and off.** *Any outdoor power equipment that cannot be controlled with the switch is dangerous and must be repaired.*
- c) **Disconnect the plug from the power source and/or the battery pack from the outdoor power equipment before making any adjustments, changing accessories, or storing outdoor power equipments.** *Such preventive safety measures reduce the risk of starting the outdoor power equipment accidentally.*
- d) **Store idle outdoor power equipments out of**

the reach of children and do not allow persons unfamiliar with the outdoor power equipment or these instructions to operate the outdoor power equipment. *Outdoor power equipments are dangerous in the hands of untrained users.*

- e) **Maintain outdoor power equipments. Check for misalignment or binding of moving parts, breakage of parts and any other condition that may affect the outdoor power equipment's operation. If damaged, have the outdoor power equipment repaired before use. Many accidents are caused by poorly maintained outdoor power equipments.**
- f) **Keep cutting tools sharp and clean. Properly maintained cutting tools with sharp cutting edges are less likely to bind and are easier to control.**
- g) **Use the outdoor power equipment, accessories and tool bits etc. in accordance with these instructions, taking into account the working conditions and the work to be performed. Use of the outdoor power equipment for operations different from those intended could result in a hazardous situation.**
- h) **Keep handles and grasping surfaces dry, clean and free from oil and grease. Slippery handles and grasping surfaces do not allow for safe handling and control of the tool in unexpected situations.**

5. Battery tool use and care

- a) **Recharge only with the charger specified by the manufacturer. A charger that is suitable for one type of battery pack may create a risk of fire when used with another battery pack.**
- b) **Use outdoor power equipments only with specifically designated battery packs. Use of any other battery packs may create a risk of injury and fire.**
- c) **When battery pack is not in use, keep it away from other metal objects, like paper clips, coins, keys, nails, screws or other small metal objects, that can make a connection from one terminal to another. Shorting the battery terminals together may cause burns or a fire.**
- d) **Under abusive conditions, liquid may be ejected from the battery; avoid contact. If contact accidentally occurs, flush with water. If liquid contacts eyes, additionally seek medical help. Liquid ejected from the battery may cause irritation or burns.**
- e) **Do not use a battery pack or tool that is damaged or modified. Damaged or modified batteries may exhibit unpredictable behaviour resulting in fire, explosion or risk of injury.**
- f) **Do not expose a battery pack or tool to fire or excessive temperature. Exposure to fire or temperature above 130 °C may cause explosion.**
- g) **Follow all charging instructions and do not charge the battery pack or tool outside the temperature range specified in the instructions. Charging improperly or at temperatures outside the specified range may damage the battery and increase the risk of fire.**

6. Service

- a) **Have your outdoor power equipment serviced by a qualified repair person using only identical replacement parts. This will ensure that the safety of the outdoor power equipment is maintained.**
- b) **Never service damaged battery packs. Service of battery packs should only be performed by the manufacturer or authorized service providers.**

ADDITIONAL SAFETY WARNING FOR POWER HEAD:

- a) This battery operated multi function power head is intended for driving an approved attachment of working head listed in this instruction manual. Never use the unit for other purpose.
- b) **WARNING:** When using electrical gardening appliances, basic safety precautions should always be followed to reduce the risk of fire, electric shock, and personal injury
- c) **WARNING:** Please read the instruction manual of the complete machine with the attachments of working head installed and this instruction manual before use. Failure to follow warnings and instructions may result in serious injury.
- d) Only use the attachments of working heads, battery packs and chargers listed in this manual, otherwise many cause serious injury, fire and electric shock.
- e) Use Right Appliance - Do not use appliance for any job except that for which it is intended. According to the work needs, install the appropriate attachments of working head according to the instructions. After confirming that the installation is correct, then start operating.
- f) Don't Force Appliance - It will do the job better and with less likelihood of a risk of injury at the rate for which it was designed.
- g) Don't Overreach - Keep proper footing and balance at all times.
- h) Keep bystanders, especially children away from work area.
- i) Avoid Dangerous Environment - Don't use appliances in damp or wet locations.
- j) Hold the tool by insulated gripping surfaces only, because the tool may contact hidden wiring. Tool contacting a "live" wire may make exposed metal parts of the tool "live" and could give the operator an electric shock.
- k) Wear eye protection. Further protective equipment for hearing, head, hands, legs and feet is recommended. Adequate protective equipment will reduce personal injury from flying debris or accidental contact with the tool.
- l) Wear eye protection. Further protective equipment for hearing, head, hands, legs and feet is recommended. Adequate protective equipment will reduce personal injury from flying debris or accidental contact with the tool.
- m) Always keep proper footing and operate the tool only when standing on fixed, secure and level surface. Slippery or unstable surfaces may cause a loss of

balance or control of the tool.

- n) Dress Properly - Do not wear loose clothing or jewelry. They can be caught in moving parts. Use of rubber gloves and substantial footwear is recommended when working outdoors. Wear protective hair covering to contain long hair.
- o) Follow all instructions when clearing jammed material, storing or servicing the tool. Make sure the switch is off and the battery pack is removed.
- p) Wear robust working pants.
- q) Stay Alert - Watch what you are doing. Use common sense. Do not operate the appliance when you are tired, sick or drunk.
- r) Store Idle Appliances Indoors - When not in use, appliances should be stored indoors in a dry and high or locked-up place with the battery pack removed - out of reach of children.
- s) Maintain Appliance with Care - Keep the appliance clean for best performance and to reduce the risk of injury. Follow instructions for lubricating and changing accessories. Keep handles dry, clean, and free from oil and grease.
- t) Check Damaged Parts - Before further use of the appliance, a guard or other part that is damaged should be carefully checked to determine that it will operate properly and perform its intended function. Check for alignment of moving parts, binding of moving parts, breakage of parts, mounting, and any other condition that may affect its operation. A guard or other part that is damaged should be properly repaired or replaced by an authorized service center unless indicated elsewhere in this manual.
- u) Do not charge the battery pack in rain, or in wet locations.
- v) Remove or disconnect the battery pack before servicing, cleaning or removing material from the appliance. Do not wash with a hose; avoid getting water in motor and electrical connections.
- w) Do not open the battery. Danger of short-circuiting.
- x) Protect the battery against heat, e.g., also against continuous sun irradiation and fire. There is danger of explosion.
- y) In case of damage and improper use of the battery, vapours maybe emitted. Provide for fresh air and seek medical help in case of complaints. The vapours can irritate the respiratory system.
- z) When the battery is defective, liquid can escape and come into contact with adjacent components. Check any parts concerned. Clean such parts or replace them, if required.

SAVE THESE INSTRUCTIONS! ADDITIONAL SPECIFIC SAFETY RULES CAN BE FOUND IN THE APPLICABLE ATTACHMENT'S OPERATOR'S MANUAL








SAFETY WARNINGS FOR BATTERY PACK

- a) Do not dismantle, open or shred cells or battery pack.
- b) Do not short-circuit a battery pack. Do not store battery packs haphazardly in a box or drawer where they may short-circuit each other or be short-circuited by conductive materials. When battery pack is not in use, keep it away from other metal objects, like paper clips, coins, keys, nails, screws or other small metal objects, that can make a connection from one terminal to another. Shorting the battery terminals together may cause burns or a fire.
- c) Do not expose battery pack to heat or fire. Avoid storage in direct sunlight.
- d) Do not subject battery pack to mechanical shock.
- e) In the event of battery leaking, do not allow the liquid to come into contact with the skin or eyes. If contact has been made, wash the affected area with copious amounts of water and seek medical advice.
- f) Keep battery pack clean and dry.
- g) Wipe the battery pack terminals with a clean dry cloth if they become dirty.
- h) Battery pack needs to be charged before use. Always refer to this instruction and use the correct charging procedure.
- i) Do not maintain battery pack on charge when not in use.
- j) After extended periods of storage, it may be necessary to charge and discharge the battery pack several times to obtain maximum performance.
- k) Recharge only with the charger specified by Kress. Do not use any charger other than that specifically provided for use with the equipment.
- l) Do not use any battery pack which is not designed for use with the equipment.
- m) Keep battery pack out of the reach of children.
- n) Retain the original product literature for future reference.
- o) Remove the battery from the equipment when not in use.
- p) Dispose of properly.
- q) Do not use battery packs of different manufacture, size or type.
- r) Keep the battery away from microwaves and high pressure.
- s) Warning! Do not use non-rechargeable batteries.

USER MANUAL REQUIREMENTS FOR WIRELESS PRODUCT

- a) Operation of this device is subject to the following two conditions:

- (1) This device may not cause harmful interference, and
 (2) this device must accept any interference received, including interference that may cause undesired operation.
- b) Caution: Changes or modifications to this unit not expressly approved by the party responsible for compliance could void the user's authority to operate the equipment.
- c) NOTE: This equipment generates, uses and can radiate radio frequency energy and, if not installed and used in accordance with the instructions, may cause harmful interference to radio communications. However, there is no guarantee that interference will not occur in a particular installation. If this equipment does cause harmful interference to radio or television reception, which can be determined by turning the equipment off and on, the user is encouraged to try to correct the interference by one or more of the following measures:
- Reorient or relocate the receiving antenna.
 - Increase the separation between the equipment and receiver.
 - Connect the equipment into an outlet on a circuit different from that to which the receiver is connected.
 - Consult the dealer or an experienced radio/TV technician for help.


 Li-Ion 	Li-Ion battery This product has been marked with a symbol relating to 'separate collection' for all battery packs and battery pack. It will then be recycled or dismantled in order to reduce the impact on the environment. Battery packs can be hazardous for the environment and for human health since they contain hazardous substances.
 Li-Ion 	
	Do not burn
	Batteries may enter water cycle if disposed improperly, which can be hazardous for ecosystem. Do not dispose of waste batteries as unsorted municipal waste.
	RCM marking

SYMBOLS

	To reduce the risk of injury, user must read instruction manual
	Wear eye protection
	Wear ear protection
	Wear dust mask
	Wear hand protection

ABN: Australian Business Number. By this number, business information such as entity type, status, business location etc. can be found at website <http://abr.business.gov.au>.
 ABN of Positec Australia Pty Limited is 14 101 682 357

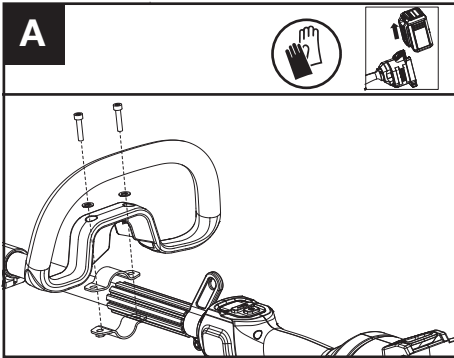
ASSEMBLY & OPERATION

 **NOTE:** Before using the tool, read the instruction book carefully.

 **BEFORE OPERATION:**

Assembling the Front Handle (See Fig. A)

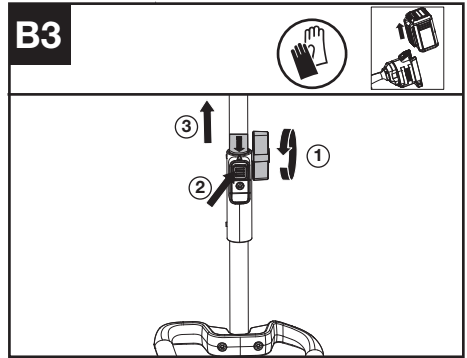
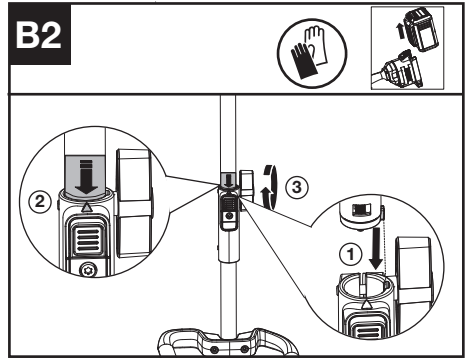
1. Attach the Front Handle and lower clamp on the shaft.
2. Put the bolt through the holes.
3. Tighten the Front Handle.



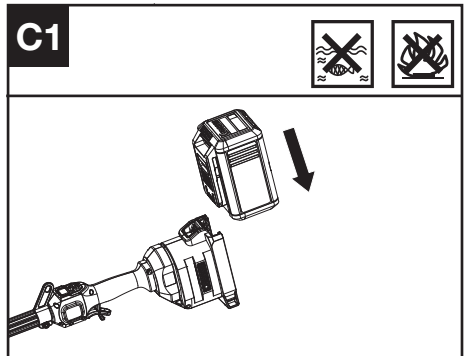
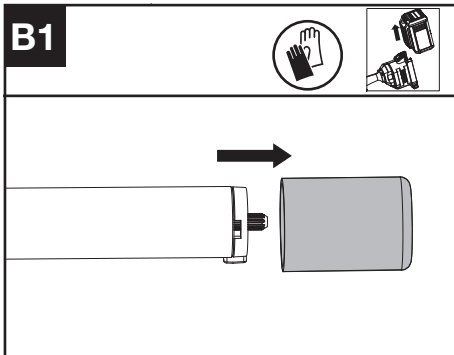
WARNING: Adjust the Front Handle as desired so as to make sure your front arm is straight during operation.

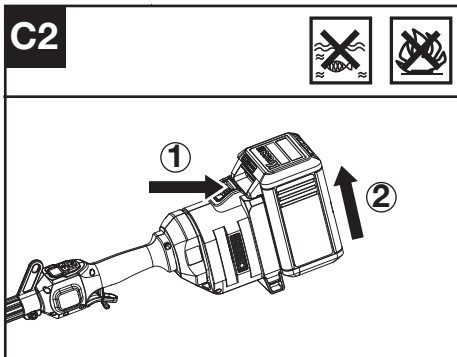
Assembling and disassembling the attachment. (See Fig. B1, B2, B3)

1. Remove the protective cap from the end of the attachment shaft.
2. To assemble, align the triangle icon on the button with the arrow label on the attachment shaft.
3. Push the shafts together until you hear a "click". The edge of the arrow label should be close to the shaft connection housing.
4. Finish the assembly by tightening the knob clockwise.
5. To disassemble, loosen the knob, turn counter clockwise, then press the release button and pull the shafts apart. Replace the protective cap on the attachment shaft to ensure that dust and debris do not get into the shaft.



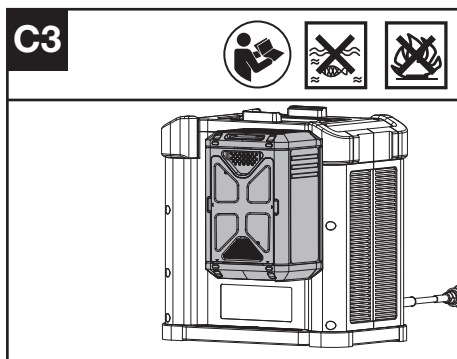
Installing & removing the battery pack (See Fig. C1, C2)





1. Slide the battery pack into the battery compartment until you hear a click.
2. Press the battery pack release to release battery pack from your tool.

CHARGING YOUR BATTERY PACK (SEE FIG. C3)



The Li-ion battery is protected against deep discharging. When the battery is depleted, the machine is switched off by means of a protective circuit. Each battery must be fully charged before the first use.

NOTE: If you need to connect the backpack battery, please refer to the Battery Pack Harness manual.

TESTING THE MACHINE AND BATTERY (See Fig. D1)

Checking the controls

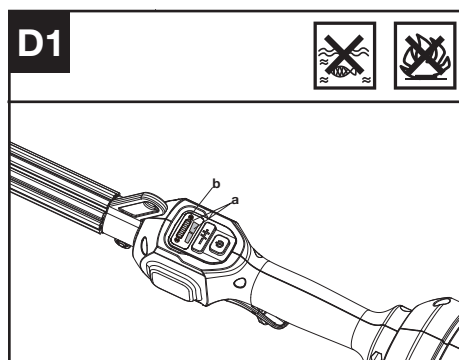
Safety Lock Off Lever and Throttle Trigger

1. Remove the battery.
2. Try to press the Throttle Trigger. If the Throttle Trigger can be pressed without pushing the Safety Lock Off Lever, the Safety Lock Off Lever is defective. Stop using the machine and contact the service agent.
4. Push the Safety Lock Off Lever first, then press the Throttle Trigger.
5. Release the Throttle Trigger and the Safety Lock

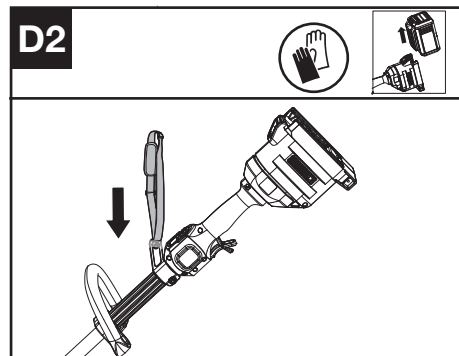
Off Lever. If the Throttle Trigger or the Safety Lock Off Lever is stuck and cannot spring back to its original position. Stop using the machine and contact the service agent.

Checking the display

1. Insert the battery.
2. Press the on / off switch. The product is switched on when the LED (a) is lit. The product is switched off when the LED (a) is out.
3. Push the Safety Lock Off Lever forward first, then squeeze and hold the throttle trigger to start the machine. (See Fig. E)
4. If the warning indicator (b) is flashing, refer to your dealer for solutions.
5. Release the throttle trigger. The machine stops after a short delay. If the machine continues to operate, remove the battery and contact the service agent.



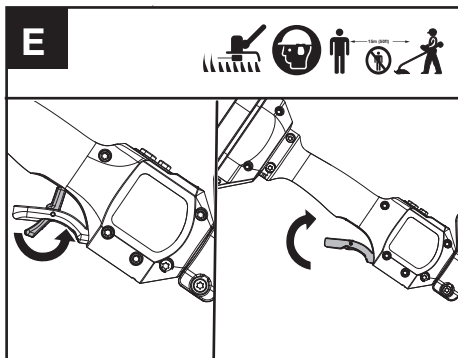
Fitting the shoulder strap (Sold Separately) (See Fig. D2)



1. Adjust the length of shoulder strap to make sure that the carabiner is about a hand's width below the top of your hip.
2. Connect the carabiner of the accessory shoulder strap to the mounting point on the shaft of the trimmer.

OPERATION:

Starting (See Fig. E)



1. Press the On / Off Switch until the green LED is lit. The green LED shows the power level. Press the minus sign (-) on the speed control to select a lower cutting speed if needed.
2. Push the Safety Lock Off Lever forward first, then squeeze and hold the throttle trigger to start the machine.

Selecting the speed

2 Power Levels can be selected depending on the application. Use the +/- to control the speed, which is as indicated by the LEDs. The higher the power level, the faster the tool runs.

For Battery tools

The recommended ambient temperature range for discharging is -20°C ~ 45°C (-4°F ~ 113°F). The recommended ambient temperature range for the charging system during charging is -5°C ~ 45°C (23°F ~ 113°F).

TRANSPORTATION

Transporting the battery

1. Ensure the battery is in a safe condition.
2. Use non-conductive packaging when transporting the battery.
3. The contained Li-Ion batteries are subject to the dangerous goods legislation requirements. Transport batteries only when the battery housing is undamaged. Pack up the batteries in such a manner that cannot move around in the packaging.

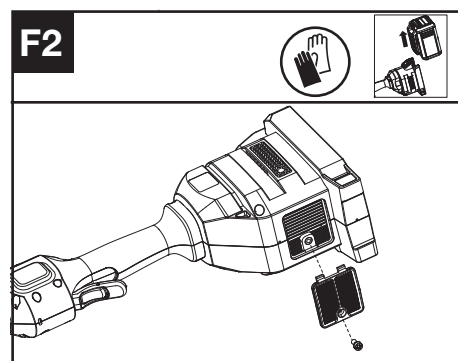
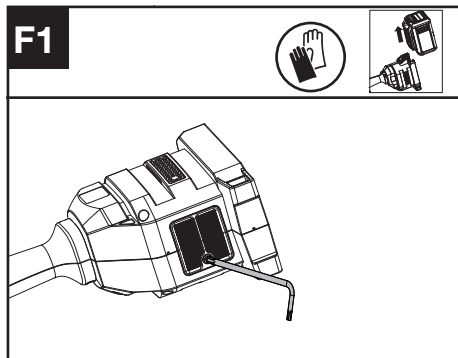
MAINTENANCE



WARNING! Always remove battery before conducting any maintenance.

Cleaning the air filter (See Fig. F1, F2)

1. Clean the area around the air filter. Use a damp cloth or a soft brush.
2. Unscrew and remove the air filter.
3. Wash the air filter with running water to remove the dirt.
4. Allow the air filter to dry in the air. And then install it in the housing by tightening the screw.



Maintenance intervals

It is recommended to lubricate the gearbox and clean the air filter every 50 hours of operation based on actual usage.

CLEANING

1. Do not use aggressive detergents or solvents. Clean the machine after use with a damp cloth dipped in mild detergent.
2. Keep battery connection free of dirt and debris, and clean with a soft and dry brush or cloth.
3. Do not spray water onto the motor and electrical components.
4. Do not use pressure washer to clean your machine.

STORAGE


1. Remove the battery pack before storage.
2. If the machine becomes wet in the rain during operation, the machine and the battery should be dried before storing or charging. Remove the battery and reinsert it if the machine fails to turn on.
3. Store the battery only within a temperature range between 5°C (41°F) and 25°C (77°F). As an example, do not leave the battery in the car in summer time.

TROUBLESHOOTING

Problems	Possible Causes	Corrective Action
Error LED lit	The battery is discharged	Charge the battery. If battery fails to charge, contact your Service Agent.
	Temperature issue.	Use the battery in surroundings where temperatures are between -5°C and 45°C (23°F and 113°F) for charge; -20°C to 45°C (-4°F to 113°F) for discharge.
	Others	Contact your Service Agent.

TECHNICAL DATA

Type Designation: **KAC104 (104-designation of machinery, representative of Power Head Attachment)**

	KAC104
Rated Voltage	60 V  MAX ***
Degree of protection	IPX4
Machine weight (Bare tool)	2.8 kg

*** Voltage measured without workload. Initial battery voltage reaches maximum of 60 volts. Nominal voltage is 54 volts.

No load speed with attachments

Cutting attachment	No load speed	Cutting attachment	No load speed
Grass Trimmer Attachment	4500 / 5900 rpm	Brush Cutter Attachment	4500 / 5900 rpm

SUGGESTED BATTERIES AND CHARGERS

Battery	Capacity	Charger	Amperage
KAC804	4.0 Ah	KAC840	30 A
KAC810 (With Backpack Harness)	11.0 Ah		

We recommend that you purchase your accessories from the same Dealer that sold you the tool. Refer to the accessory packaging for further details. Your Dealer can assist you and offer advice.

TECHNICAL DATA FOR BATTERY PACK (OPTIONAL)

Frequency bands for Bluetooth	2400-2483.5 MHz
Maximum Output Power for Bluetooth	8 dBm

COMPATIBLE ACCESSORY ATTACHMENTS

Model	Cutting attachment	Model	Cutting attachment
KAC141	Straight Edger Attachment	KAC142	Curved Edger Attachment
KAC200	Hedger Trimmer Attachment	KAC360	Extension Shaft (For use with KAC200/KAC361)
KAC361	Pole Saw Attachment	KAC105	Grass Trimmer Attachment

Note: Please refer to the instruction manual for each job header for details.

Positec Australia Pty Limited
10 Corporate Blvd Bayswater , VIC 3153, Australia



Copyright © 2024, Positec. All Rights Reserved.
AR01751300